



Ph.: (316) 681-3369
 e-mail: heartsdesire3210@yahoo.com
 www.hearts-desire.net

Heart's Desire

October 2008

xxx

xxx

St. Charles, Missouri was a fabulous venue for a **new** fall market. Approximately half of the market featured needlepoint and knitting vendors allowing a more relaxed shopping atmosphere. Being less pressed for time permitted more shop owner and vendor visiting and some free time to do some sight seeing. St. Charles is right on the Missouri River and overflows with history. This allowed my husband, Rob, and me interesting sight seeing within two miles. The easy 6-1/2 hour drive to and from St. Charles made traveling a breeze. Best of all.....Cross-stitch goodies galore!

Open a window and get some fresh autumn air, have a chair and read about all the wonderful new things just waiting for your stitching hands. This newsletter is filled with lots of new designs, the fall class schedule, holiday finishing deadlines, new lamps, food drive, class schedule and Kyle Hicks fundraiser update.

Country Cottage Needleworks: There are two new designs in Nikki Leeman's *Country Cottage Kids* line. Four little princesses with tiaras and wands stand proudly beside their fairy tale castle. Yellow, purple, blue & pink make a colorful Princess Parade. Chart \$8.25

Boys and Bugs is a perfect name and design for any little boy. (Maybe even your little tomboy) Out by the backyard tree you'll find each of the four little boys holding a butterfly net, bug jar, frog & worm. The words below are a little boy's delight. "Bumblebees, fireflies, ladybugs, ants, butterflies & dragonflies." Chart \$8.25

Elizabeth's Needlework Designs:

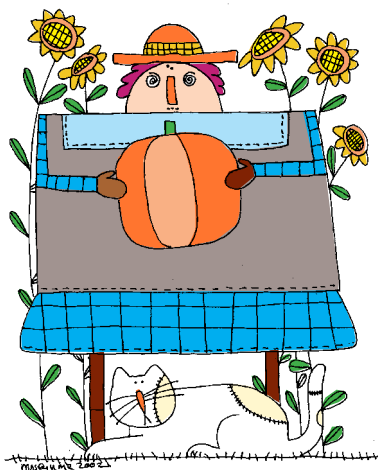
I always look forward to drooling over Elizabeth's beautifully stitched models. She uses a variety of stitches, motifs and border segments to accentuate her impeccable stitching.

Be at Peace offers a nice combination of a bright color palette and the sampler look. Dragonflies, butterflies, flowers, vines and ladybugs enhance the phrase "Listen to the Heart of Nature...Be at Peace with all things". Wonderful diagrams of the six different stitches encourage a new adventure in stitching. Chart \$10.25

Little Leaf Designs from Elizabeth's Needlework are small designs that include a charm and specialty floss. These designs often feature one or two specialty stitches and most can be stitched in a couple good evenings of stitching. I filled my shopping bag with a variety of old and new designs. The two newest designs are Night Before Christmas & I Love Sheep. \$12.25 each

Erica Michaels: The popularity of Over 1 stitching inspired Linda Stolz to create the new line named *Petites Collection*. This line features stitching on 40ct. Silk gauze using the *continental* stitch to make half stitches to

create adorable designs. Choose from My Best Friend, Little Bit o' Autumn & Holly Sampler. Charts includes 40ct. Gauze. Charts - \$15.25 each



Hinzeit: Simple and classy best describe Charmed Seasons Greetings. Sue Goates stitched up the shop model in just one evening. The words *Seasons Greetings* stitched in black on 28ct. Summer Khaki with white snowflakes are very striking. The black frame is embellished with an Old Fashioned Santa face on a large round ornament giving the piece a perfect finishing touch. Chart \$12.25 Frame \$49.00

New in the mini block series is Rooster. This design simply spells out *Rooster* leaving space above or below the letter for a cute rooster charm. Behind each charm the background is filled with backstitching creating a chicken wire effect. A brick red frame with metal rooster ornament from **Kay's Frames** is a perfect finishing touch. Chart/charm pack \$ 16.25. Frame \$45.00.

Other new designs from Hinzeit include School Matters, Charmed Merry Christmas,

Charmed Haunted Halloween, Charmed Gathering Place and Charmed Winter Wishes. Prices range from \$10.25 - \$12.25

JBW: The French Country Collection series has proven to be a very popular one for Judy Whitman of JBW. Judy uses shapes and letters within a specific shape to create these unique designs. A white tray holds a healthy serving of plum pudding topped with a sprig of holly and berries. English Plum Pudding features motifs including a crown, bird, hearts, a tree, holly and a reindeer. You just think Christmas when you see this design. Chart \$4.25

Christmas just wouldn't be the same without a little holiday shopping. Christmas Purse uses the words "I love to go Christmas Shopping" creating the shape of a purse. A simple purse handle and holly charm add a nice touch of elegance. This would be adorable stitched and attached to a Christmas tote bag. Chart \$4.25 Charm \$1.00

Without a doubt the most adorable model I saw at market was the mini-garland made out of several "Over 1" mittens from Red Mitten Collection I and Red Mitten Collection II. Stitched on 28ct. White "Over 1" with overdyed Cherry Wine or Garnet the designs are 1-1/2" X 2-1/4" and simply adorable. What a fun way to try "Over 1". The designs in Collection I include the alphabet within the shape of a mitten and holiday greetings and well wishes in the other mitten. Collection II includes a band sampler style mitten and a Christmas motif mitten with the background stitched leaving unstitched motifs. Each chart \$4.25

I haven't gotten a lot of stitching done lately but I MUST get started on one of the designs in Baby's First Christmas. All three designs include the words "Baby's First Christmas" but you can choose from a rocking horse, gingerbread boy or stocking. By Christmas I will have my first biological

grandchild and SHE MUST have a stitched ornament for her first Christmas. Chart \$4.25 Charms \$2.00

La-D-Da: Something Wicked features the loooooongest curly toed witch's shoe I've ever seen. The toe stretches the whole width of the design just below the phrase "By the pricking of my thumbs something wicked this way comes". Karen Lehman stitched this up on 28ct. Cognac Cashel. What a fun Halloween design. Chart \$ 8.25

A long branch filled with leaves and berries makes a perfect perch for a little bird in All our Troubles. The verse "*If all our troubles were hung on a line you would take yours & I would take mine*" is tucked within the branch. Chart \$9.25

Lizzie*Kate: Things were a buzz around the Lizzie*Kate room at St. Charles. Linda & Alan made a wonderful presentation with 3 new kits. The Christmas is Forever 2008 Special Edition kit features a very memorable saying. "Christmas is forever not just for a day for loving sharing, giving are not to put away". Four blocks scattered throughout the phrase include a pair of mittens, a stocking, cardinal on a pine branch and the "C" starting the word Christmas. A bright colorful palette of Crescent Colours and 28ct. linen are included. Kit \$28.25

Bright trendy colors on 30ct. cream fabric make a perfect fit for the kit Santa Wants to Know! "Naughty.....or Nice?" is the question asked in this fun design. Kit includes fabric and buttons. Kit \$12.25. This cute design is finished into a cute little box/package perfect for your desk, mantle or table. Now you can finish yours exactly like Lizzie*Kate's with the Magic by Mona kit. The kit includes everything you need to finish your project. Backing boards, same fabric as Lizzie*Kate's model, batting, jingle bells, pre-made cording, instructions and pre-made bow for the top. Kit - \$24.00

Probably my favorite of the kits is the Be Blox Be Jolly Be Merry Ornaments. Each 2-1/4" X 2-1/4" design simply states Be Jolly or Be Merry. Kit includes one piece of red and one piece of green linen to enhance the bright colorful DMC flosses. Fun, cute and quick! Kit \$12.25

Since the last newsletter Lizzie*Kate has also released several other charts. Spirit of Christmas series continues with Tree/Candy & Faith/Cheer. Make sure you take a look at Lizzie*Kate's models with all 12 words stitched together. We also have the "Over 1" version on 24ct. Banding stitched by Jo Shearburn. Jo also stitched the Living with Charm series over one on 24ct. Banding. THANKS JO! Your models have inspired many! Charts - \$8.25 each

All of us have challenging days now and then. Well I was in the middle of one of those days when Linda delivered the last automatic (new designs). Don't get your tinsel in a tangle was the first chart I noticed. Talk about perfect timing....I needed that good laugh. Simply stating the title among a

Christmas tree and a stack of packages makes for a quick stitch. Chart \$4.25 Buttons - \$4.20

The 2008 Lizzie*Kate Santa finds the jolly man himself claiming Santa's Got the Goods. With packages stacked high Santa raises one above his head as if he's shouting he has the goods. A Silver Star charm adorns a package and tiny white buttons fill the sky with snowflakes. Chart \$4.25 Charms \$2.50

Honestly, where does time go? It seems we zip through the days and weeks much too quickly. How could it be possible that Tiny Tidings XIII has been released? This annual chart pack has five jolly designs to choose from. Select from Dec. 25th, Ready Set Snow, Jolly Holiday, Our 1st Christmas and Make Merry! Chart \$7.25 Embellishment pack \$5.00

With his sack over his shoulder and stocking in hand Jolly St. Nick is ready for the Christmas season. Santa '08 punchneedle Santa uses bright colors like Louisiana hot sauce, Emerald & Holly and is finished into a triangular shaped standup. Come take a look at Lizzie*Kate's adorable model. Very cute! \$14.25

Prairie Schooler: A new Halloween foursome makes a nice companion to a witchy Halloween sampler in When Witches go Riding. Topping the sampler is an orange band making a perfect background for two black cats and a jack-o-lantern. The sky below is filled with the phrase "When witches go riding, and black cats are seen. The moon laughs & whispers, 'tis near Halloween". The scene below depicts Halloween night as a witch sneaks through the yard and the wise old owl looks down from above. Pat Oetinger stitched up the foursome that includes a jack-o-lantern, scary black cat face, moon face and the wicked witch profile. Very Cute! Chart \$8.25

November and December use the same format of a tall narrow and small square design. The leaves swirl around the house as a fox and turkey stroll through the yard. The November sky is filled with geese and the phrase "Dull November Brings the Blast then the leaves go whirling past". The luscious colors of fall fill the scene surrounding the phrase "Windows winking cheerful lights, warm the cold November nights". Chart \$8.25

The phrase "Chill December brings the Sleet a blazing fire and Holiday treat" sets the mood for the snowy winter scene in December. The snow covered ground finds a boy carrying a tree as his dog pulls a sled of firewood. The cardinals are searching for warmth in the trees as the chimney smoke fills the air. The smaller design features six tall slender blocks filled with a Christmas tree, Santa, fireplace, snow scene, boy with dog and "Happy Holidays". As most of you know I love snow so this one will definitely be in my stash. Chart \$8.25

Santas & Snowmen is filled with some of the cutest snowmen and Santas you've ever seen. Carol Newlin has stitched all 8 designs

and they're ready to be made into ornaments. Choose from a Santa or reindeer profile, Santa waving with his bag in tow or Santa with a lantern in hand. Maybe you'd rather stitch a snowman outside your door or snowman with broom in hand or my favorite the snowman profile. What fun designs! Chart \$8.25

Shepherd's Bush: The annual 2008 stocking is an angel holding a fruit basket making Anna's Stocking. The rich color of Wild Berries Crescent Colors Pearl cotton fills the body of her dress accentuating the fruit motifs. A row of shepherds tending their sheep fills the bottom of the stocking. Chart \$6.25 Charms \$20.00

Be sure to take a look at the two newest in the Scatter series. Scatter Pumpkins & Scatter Christmas. Chart \$5.25 each

Stoney Creek: A star shines from above on a pair of ice skates hanging on the picket fence in this picturesque winter scene. A garland of evergreens with poinsettias tucked atop the skates makes a perfect perching place for the chickadee and cardinal. Also included in Peace of Christmas - Book 400 Collector's Edition are four other designs including the annual stocking and Santa plate. Book - \$10.75

Needing a nice reasonable priced Christmas gift? Why not stitch up a Christmas towel or two? Choose from 17 different designs offered in Merry Towels. Shown on 14ct. White velour towels, you can choose from designs like Noel, Merry Christmas, Believe, or my favorite When you stop believing in Santa you get underwear. Great buy at \$9.75

Three Wisemen is a wonderful design depicting the true meaning of Christmas. Overlooking the city of Bethlehem we find three wisemen with camels following the star with gifts in hand. Chart \$7.75

Timberlane Studios: This is a company out of Lawrence, Kansas with unique KU and K-State designs. Choose from Jayhawk Progression, Rock Chalk Two, Jayhawk Sign, and Calendar Jay for all you Jayhawk fans. Prefer the PURPLE? Then you'll love the KSU Sunflower Sampler, KSU History, and Kansas State Three designs. Is your house divided? You'll love the House Divided design. Charts \$9.25 each

The Primitive Needle: This was the first market for designer Lisa Roswell from North Fairfield, Ohio. Lisa is a mother of three, a RN at an oncology center, loves to garden, stitch and read. Her favorite holiday is Halloween. A very busy lady. You may have seen her charts in the store before but we've not featured her designs in the newsletter. The By the light of the Moon complimentary chart featured in this newsletter is one of Lisa's designs.

Patriotic Jack Game Board is the latest in the game board series. The tall narrow design is centered on a checkerboard with

primitive style jack-o-lantern supporting a folk art American flag at the top and bottom. The star border and "1776" add to the wonderful primitive look. Other fun game board designs include the [Hare Game Board](#), [Hallow Game Board](#) & [Yule Game Board](#). Chart \$10.25

In this fast paced high tech world the words "live simply that other may simply live" carries a strong message. [Simply Live](#) borders that phrase with colorful Quaker motifs and alphabet below. This design calls for beautiful Valdani threads but also cross references them to Weeks Dye Works, Gentle Art & Crescent Colours. Chart \$10.25

What would Halloween be without something a little *Witchy*? Tiny little pumpkins border this motif filled design centered around the word *Witchy*. The holiday is well represented with fun motifs including a witch's hat, owl, and jack-o-lantern, black cat and key to unlock that haunted house door. Chart \$8.25

Other new designs include [Corn and Grain](#), [Hallow Sampler](#), [Yule Sampler](#), [Near Halloween](#) & [Halloween Parcheesi](#). \$10.25 each

New Lamps

Frequently we have customers who come in frustrated with vision problems causing stitching problems. Some have even given up stitching. Please before you give up stitching; let us show you some options. It could be as simple as changing the type or count of fabric. Or maybe you need to try one of a variety of magnification options including around the neck magnifiers, clip-on magnifying glasses or one of the two new magnifying lights.

The [Mighty Bright](#) L.E.D floor light features 12 L.E.D. lights arranged in four groups of 3 lights around a 5" wide magnifier with 2X power. A weighted base supports a flexible neck that extends to 54". A 6 foot AC power cord is included. Very portable and can be used anywhere with 3 D-sized batteries. A great magnifying light for only \$110.00.

Heart's Desire has sold **Dazor** brand lights for years. The most popular circline retails around \$400 and carries a five year warranty. It's an investment that will last for years. I've owned mine for 13 years and haven't changed the light bulb. New from the Dazor company is the **J-Series** magnifier lamp. The lamp features a 3-1/2" 5-Diopter lens surrounded by a circular 18-watt Full-Spectrum bulb. The weighted base supports a flexible neck and is 48" tall. The lamp has a one year warranty, excluding bulb. Great value for \$130.00.

Before you give up a wonderful hobby, please come in and check out your options.

Threads

A fabulous selection of fibers is available for designers and stitchers. Unfortunately Heart's Desire's budget doesn't allow us to stock everything. [Valdani](#) and [Gloriana](#) threads have just been picked up by two of

our main distributors making it very accessible to all of us. Don't hesitate to ask if we can get special threads for you. Some companies require buying several of each color while others will let us order exactly what we need. Working with unique and different fibers can really be a lot of fun.

Model Sale



It's so difficult to part with any of our models, but in the last 2 years we've accumulated quite a few models that we can no longer get the charts for. It's a shame to have them in storage when someone could be enjoying them.

Starting Friday, November 28th and running through Christmas all the models for sale will be in the classroom with a special marked to move price tag. All are beautifully stitched, professionally finished and needing a new home. What wonderful gift ideas! Come take a look.

Kyle Hicks Update

The generosity of stitchers has once again been a huge inspiration to all of us here at Heart's Desire. The benefit drawing raised \$1300.00 towards the Kyle Hicks bone marrow transplant fund. Joyce Holt generously donated a total of 5 Over 1

framed pieces towards the benefit. The following customers were the **lucky** winners: Cathy Ashley, Gabriela Cleary, Kathleen Dale, Pam Lacey & Lorna Radford. Congratulations! THANKS TO EVERYONE FOR YOUR DONATIONS!

Food Drive

The *Douglas Design District* has joined with the Kansas Food Bank to collect food for the holiday season. The economy is an all too familiar topic of conversation. As we ponder over our holiday gift giving, let us not forget those that are less fortunate and merely struggle to put food on the table. As part of the *Douglas Design District*, Heart's Desire has a collection box at our rear entrance for any contributions from now until December 19. If we all gave one item.....we would make a sizeable difference.

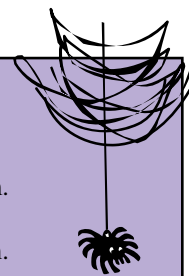
New Models

It's impossible to write about everything new so make sure you take a look at the following new models in the store. [Mouth of the Flower](#) by The Stitching Studio stitched Over 1 by Joyce Holt. [Bone Appetit](#) by The Cross-eyed Cricket Collection stitched by Karen Lehman. [Cherry Tree Inn](#) by Little House Needleworks stitched by Sherre Winkle. [Bushel & a Peck](#) by La-D-Da stitched Over-1 by Joyce Holt.

Framing & Finishing Deadlines

The holidays are fast approaching and it's time to remind you of the framing and finishing deadlines. The **FRAMING DEADLINE: NOVEMBER 26th** (That's the day before Thanksgiving). As many of you know our finishing lady retired earlier this year. We've recently found another finisher that is doing a wonderful job. The **FINISHING DEADLINE: NOVEMBER 8th**. We must have your finished pieces in our hands by these dates to guarantee it will be ready for Christmas. You can always check with us after those dates to see if we can squeeze in another gift!

Happy Stitching! Joyce, Pat, Linda, Karla, Sherre, Carol and Debbie.



Heart's Desire Calendar

Fall Class Schedule

Beginner Cross stitchTues. Oct. 14th5:30-7:30 p.m.
Over 2Sat. Oct. 18th9-11 a.m.
Over 1Tues. Oct 21st5:30-7:30 p.m.
HardangerSat. Oct. 25th9-12 noon
Russian PunchneedleTues. Oct. 28th5:30-7:30 p.m.
Over 1Sat. Nov. 1st9-11 a.m.
Russian PunchneedleSat. Nov. 8th9-11 a.m.
BeginnerSat. Nov. 15th9-11 a.m.
Over 2Tues. Nov. 18th5:30-7:30p.m.

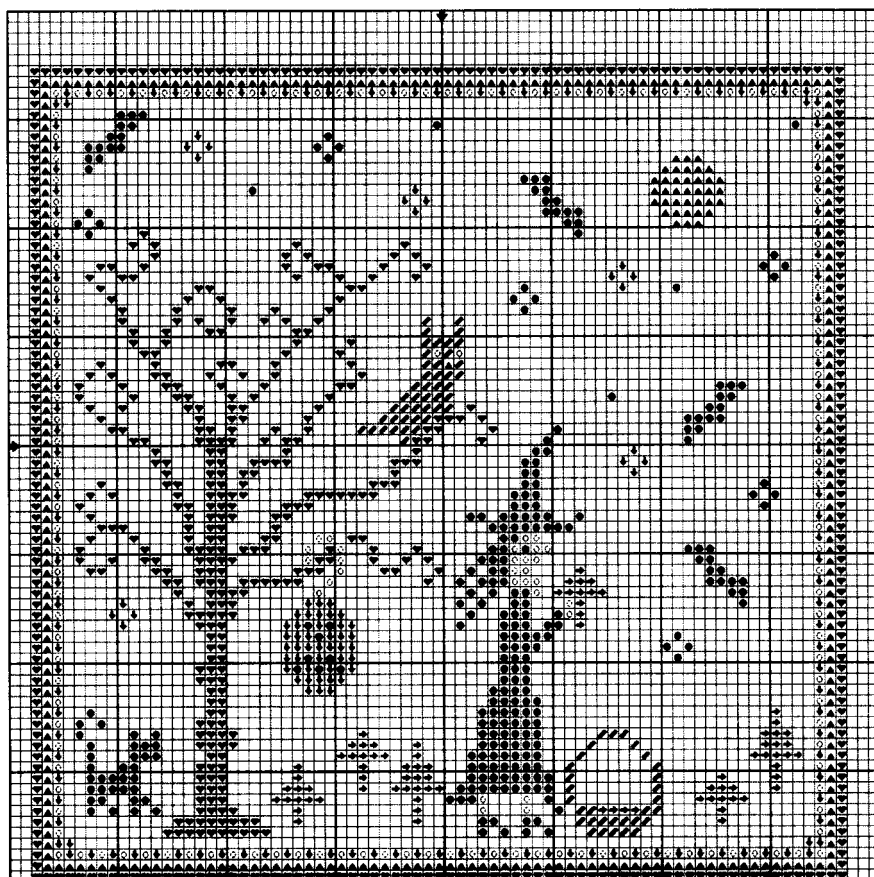
Heart's Desire

3210 E. Douglas • Wichita, KS 67208

Shop Hours:
 Tues., Weds., & Fri. 10 a.m. - 5 p.m.
 Thurs. 10 a.m. - 6 p.m.
 Sat. 10 a.m. - 4 p.m.
 Closed on Sunday and Monday.
 (316) 681-3369
 e-mail: heartsdesire3210@yahoo.com
 www.hearts-desire.net



PRSR STD
 U.S. POSTAGE
PAID
 WICHITA, KS
 PERMIT NO. 84



Heart's Desire

The Primitive Needle

By The Light Of The Moon

Stitch Count: 75w x 75h
 Cross Stitch: Complete each stitch for a variegated look.
 Overdyed Floss: Weeks Dye Works

Symbol	Color	
▄	Chestnut	This design may be reproduced
➔	Swamp Water	
♥	Bark	
●	Charcoal	
○	Moss	
▲	Gold	
▼	Pumpkin	

© The Primitive Needle 2008
www.ThePrimitiveneedlehome.com